

ECONNECT FINAL CONFERENCE

Tools, planning, and stakeholder
involvement for the establishment of an
ecological network

Anne Katrin Heinrichs
Berchtesgaden National Park



Existing concepts?

Partners?

Challenges?

Time frame?

Stakeholder?

Data?

Knowledge?

Initiatives?

Funding?

ECONNECT Pilot Area
 The transboundary area Berchtesgaden - Salzburg

Major Town
5000 inhabitants
 Boundary

Region Boundary
 Province Boundary

Major River
 Lake

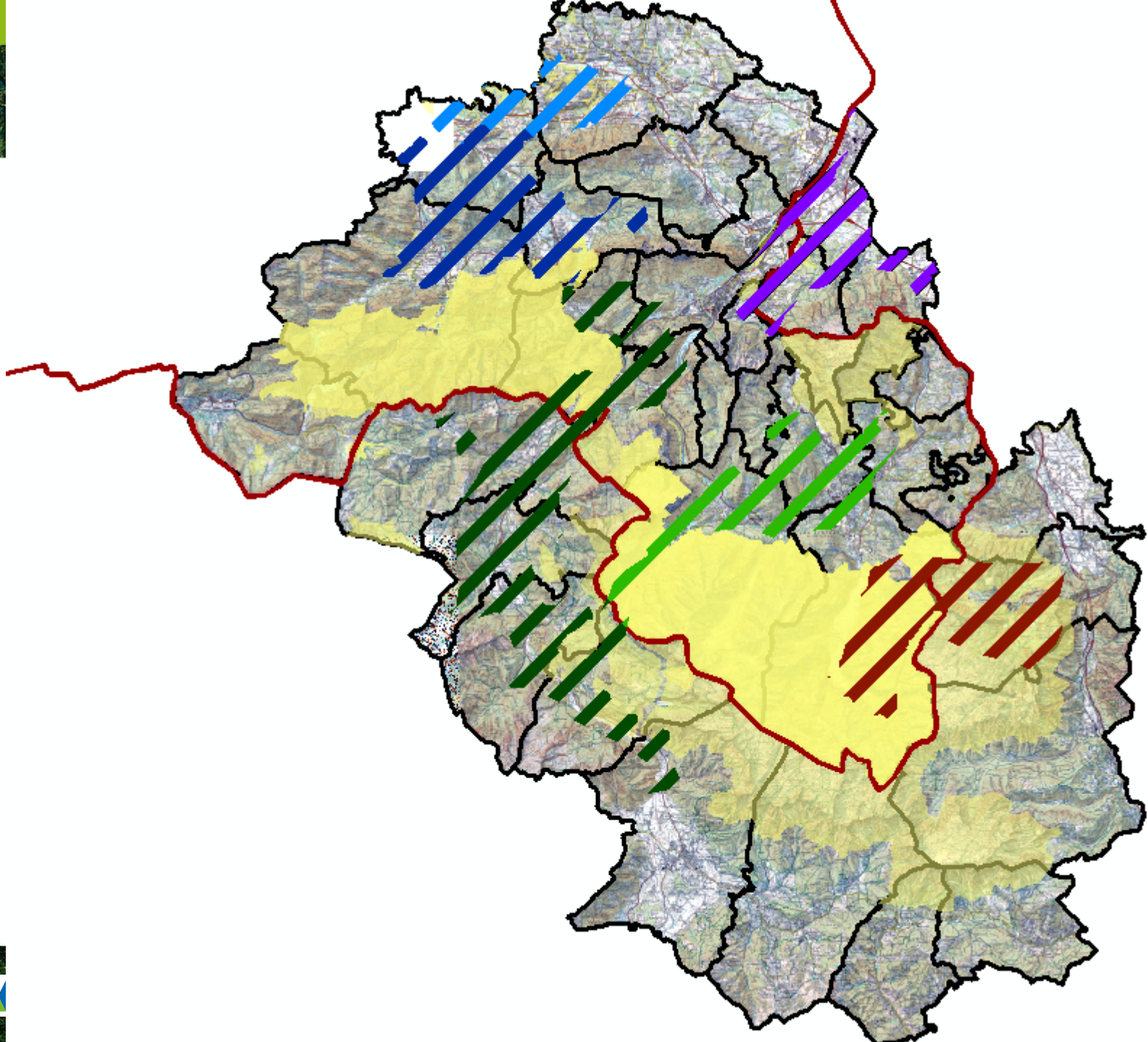
Natura 2000 Site
 Protected Area
 National Park

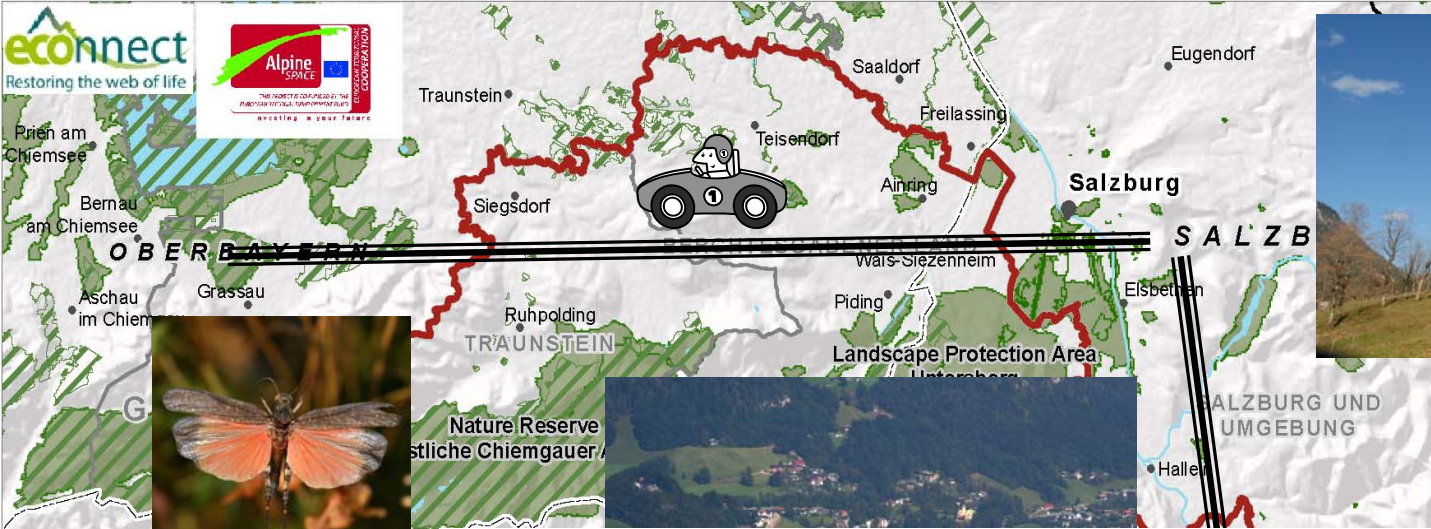
N Scale: 1:350,000 at A4 size
0 5 10 Km

Produced by:
EURAC Institute for Regional Development
research and Location Management
December 2009

Data Sources: Pilot Area Dilimitation: NP Berchtesgaden, 2009; Protected Areas, Natura 2000 sites: ©EC, DG Env; Settlements, Lakes: ©WIGeoGIS GmbH, 2009; Rivers: ©Eurogeographics, 2009; Administrative Boundaries: ©Eurostat, 2006; Terrain: ©MET/NASA, 2009.

ECONNECT Pilot Area
The Hohe Tauern Region

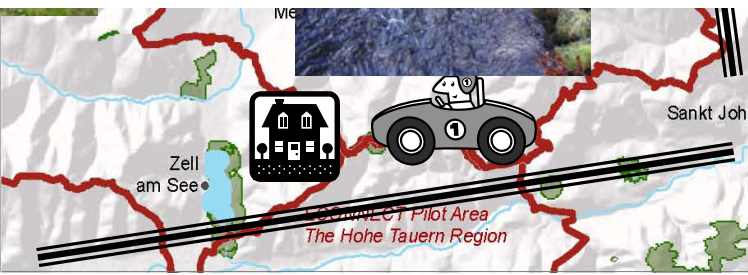




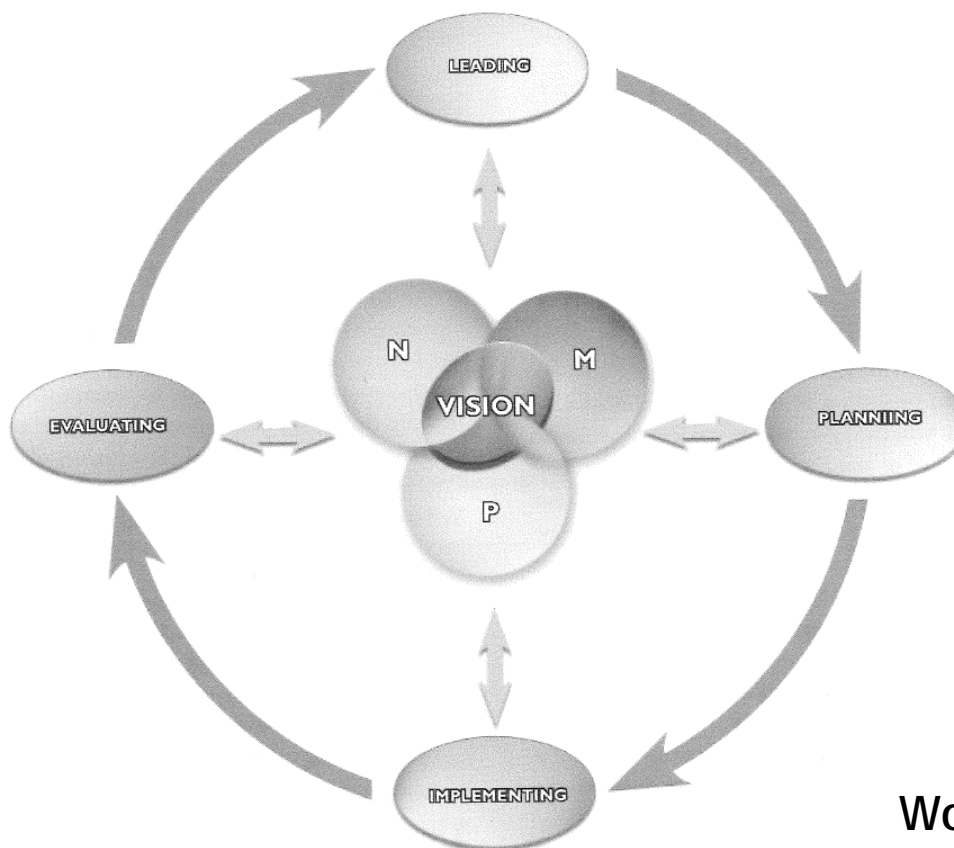
- ECONNECT Pilot Area
- The transboundary area Berchtesgaden - Salzburg
- Major Town
- Town (> 5000 inhabitants)
- Country Boundary
- Region Boundary
- Province Boundary
- Major River
- Lake
- Natura 2000 Site
- Protected Area
- National Park

Where to do what in the available time with the available resources?

Intitating a sustainable regional process to implement connectivity in the Alps?

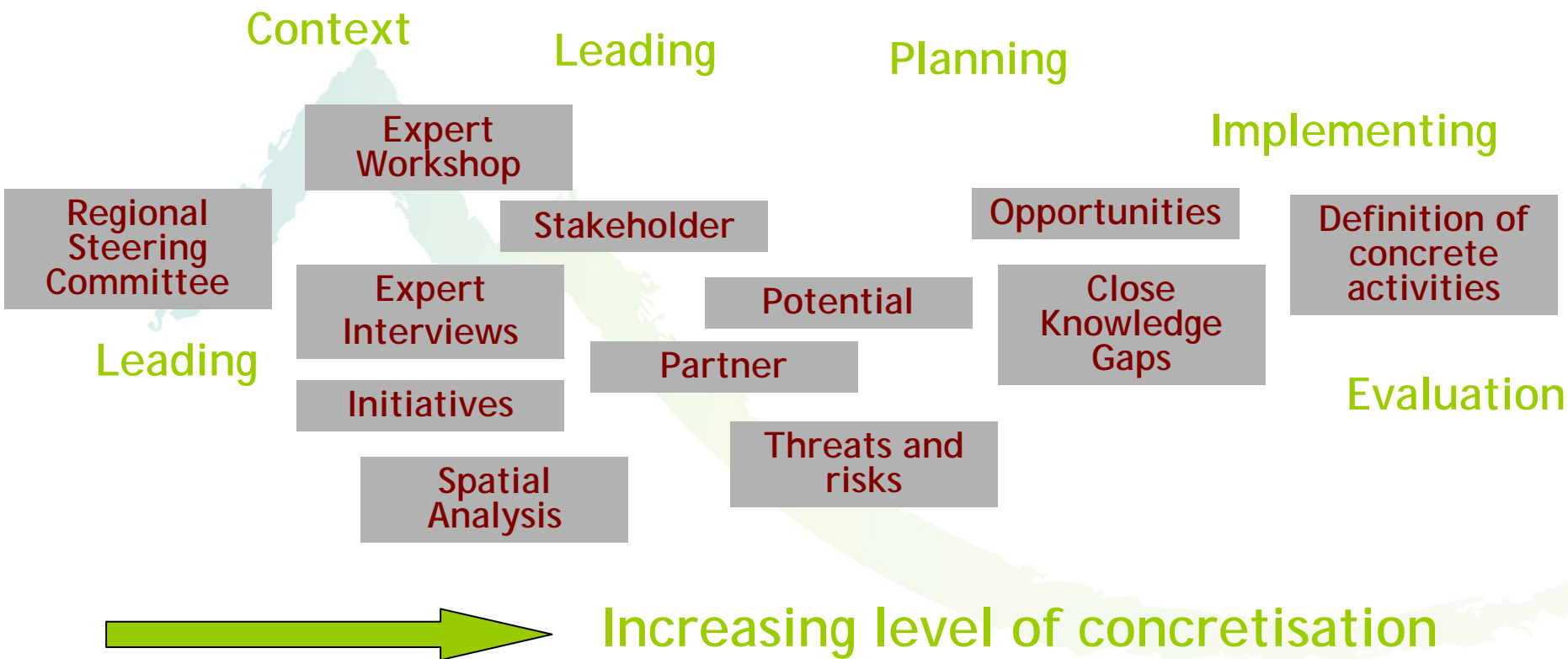


Connectivity Management Framework



Worboys (2010)

Planning Process



Regional Steering Committee

- Guarantee coordination between main actors
- Gain support in content-related questions and for important decisions (strategy, concrete aims, activities)
- 8 permanent members (main regional actors and nature conservation authorities, protected areas of the region)
- Can be expanded (experts etc.)
- Reflect transboundary character of the pilot region

Expert Workshop

- Representatives of responsible authorities
Forestry, agriculture, landscape planning, water management, nature conservation
- Discussion of delimitation
- Apply common methodology (Continuum)
 - Problem analysis and setting aims
 - Define priority landscape types, habitats and species
 - Define activities, instruments, indicators



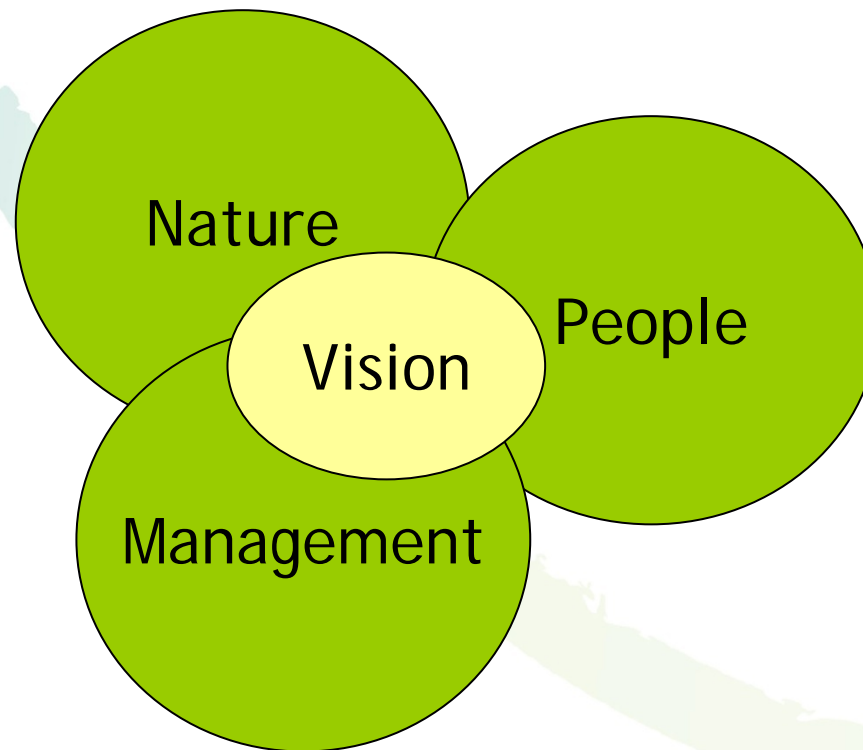
Workshop with representatives of administrations
April 2009

Ergebnismatrix zur Prioritätenfindung für das Projekt ECONNECT in der Pilotregion „Berchtesgaden – Salzburg“

Regionale Themenschwerpunkte	1) Hauptzielsetzungen	2) Prioritäre Gebietstypen	3) Problem-bereiche/Barrieren Potenziale	4) Maßnahmen/ Aktivitäten	5) Indikatoren/ Instrumentarien
I. Grenzübergreifender Schutzgebietskomplex NLP Berchtesgaden, Szbg. Kalkhochalpen, NP Weißbach, Bayer. Saalforsten		Alpine Lebensräume	Mentale Barrieren Technische Barrieren Gesetzliche Barrieren Landnutzungspraktiken (Intensivierung oder Aufgabe)		Alpenschneehuhn
				Paßsituation Hirschbichl	Rotwild
				Lebensraum Höhle Vernetzung Gebäude	Wimperfledermaus Kleine Hufeisennase
II. Verbindung SG-Komplex nach Norden Beziehung Alpen - Alpenvorland		Auwälder			Maivogel
		Extensive Landwirtschaftsflächen (Almen)		Erfahrungsaustausch Vertragsnaturschutz Evaluierung Agrarumweltmaßnahmen Sozioökonomische Aspekte/Tourismus Natura2000-Managementpläne	<i>Arnica montana</i> <i>Campanula glomerata</i>
		Übergang Offenland - Wald			Birkhuhn, Zitronenzeisig, Äskulapnatter, Schlingnatter, Kreuzotter, Alpen-Kammolch, Erdkröte, Grasfrosch
		Bergmischwald		Nachhaltige Schutzkonzepte	Ringdrossel, Dreizehenspecht, Weißrückenspecht, Uhu, Zwergschnäpper, Auerhuhn

Regional Focus

Additional expert interviews



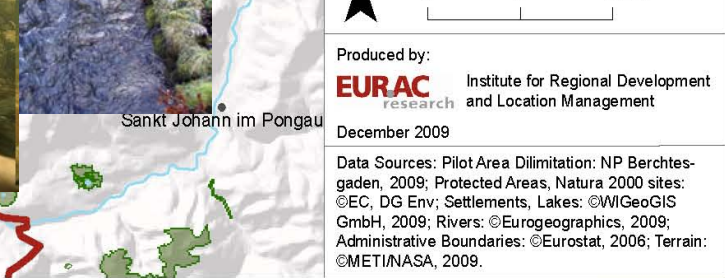
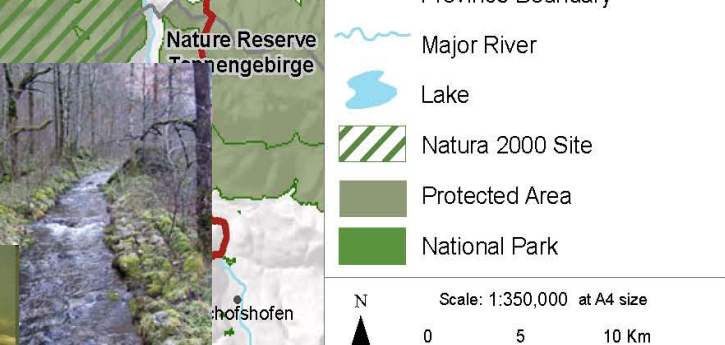
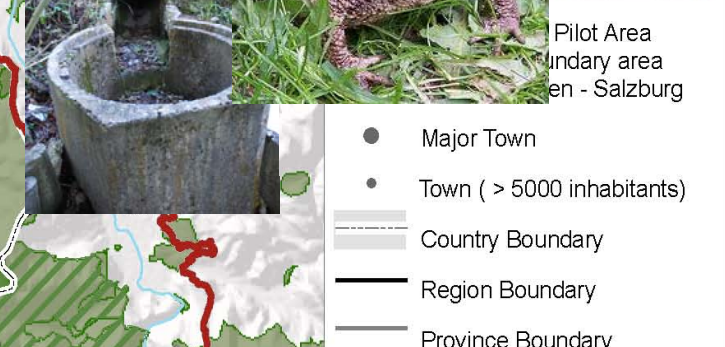
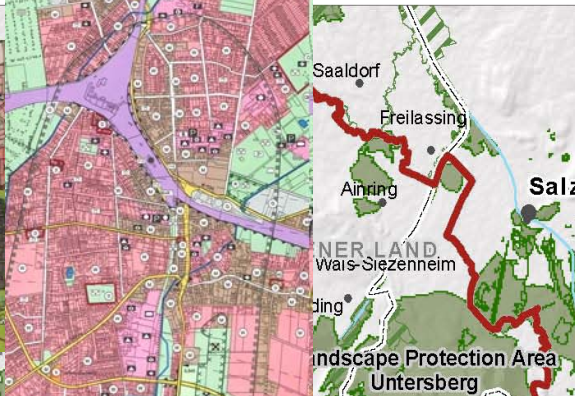
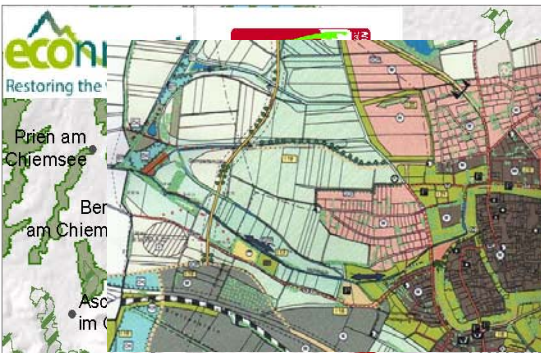
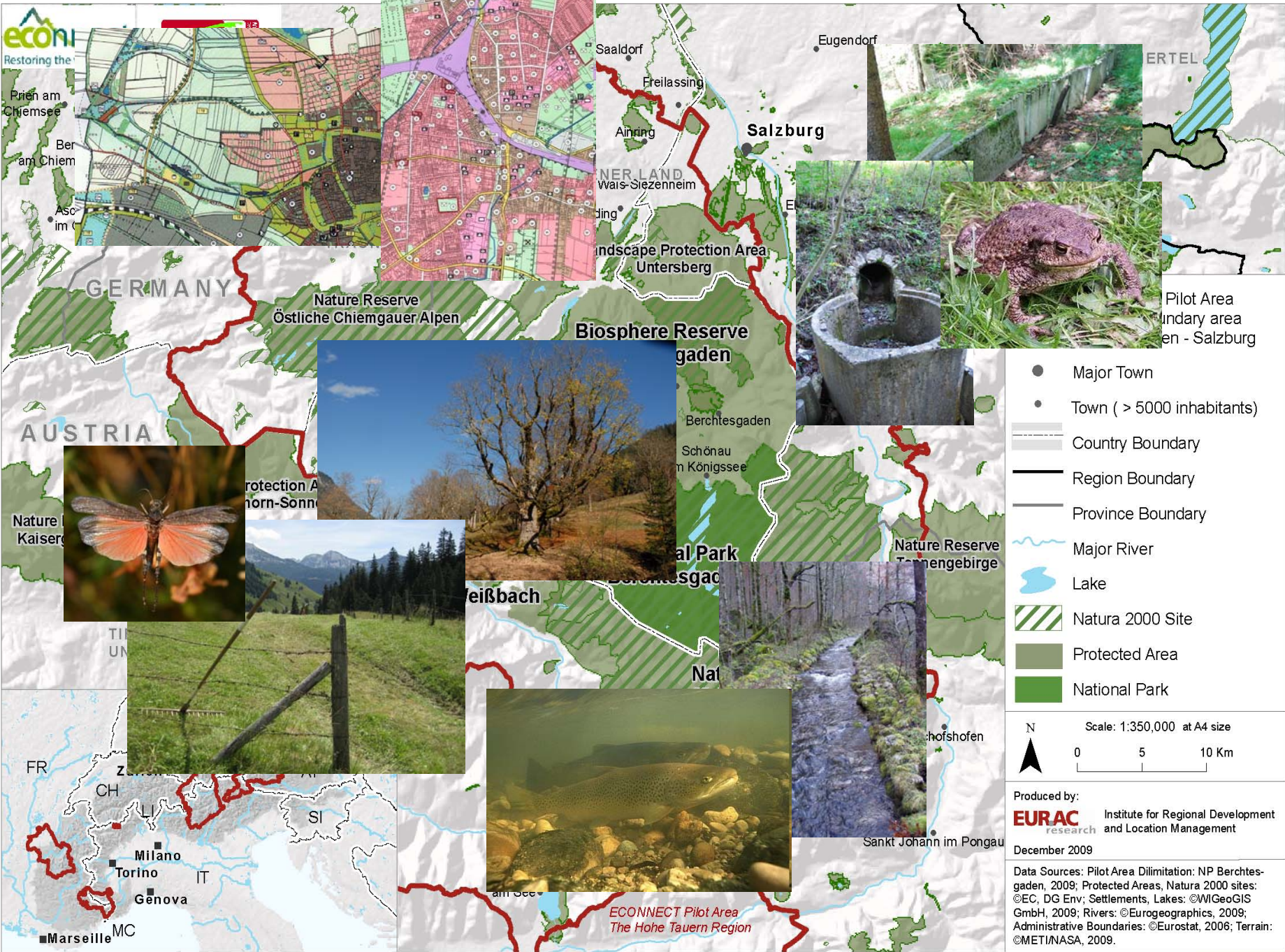
Worboys (2010)

Stakeholder, Partner, Opportunities

- What is feasible?
- Who can contribute?
- Who are important partners for a sustainable process?
- How can we reach potential partner?
- How can we communicate our message?
- How can we involve partner?

Definition of concrete activities

- Reflect specific challenges of the pilot region
- Involve different sectors
- Ensure understanding of potential partner (raising awareness)
- Identify co-benefit opportunities
- Define exemplary measures



Saletbach



Information evening Saletbach



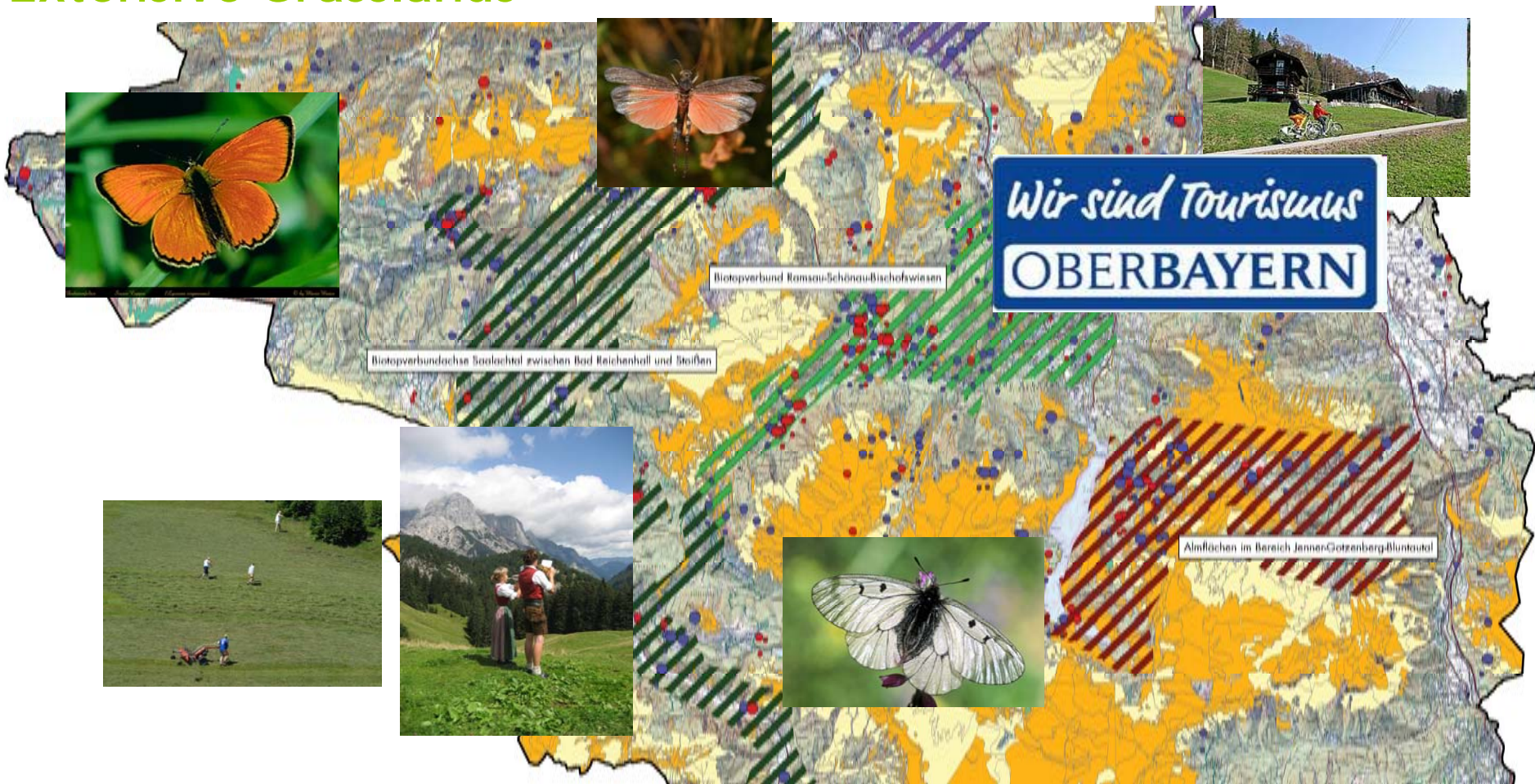
Coordination on-site



Taubensee

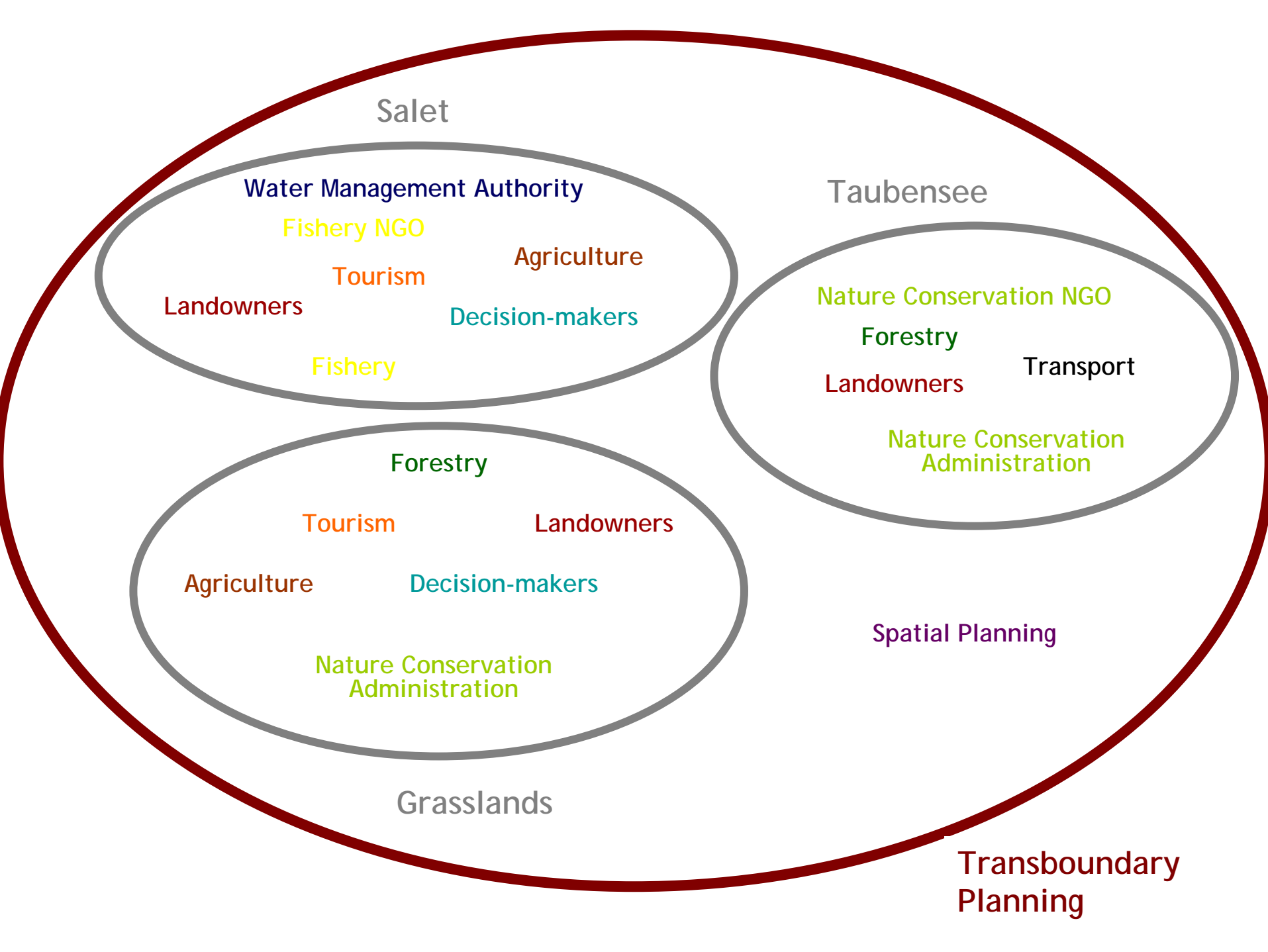


Extensive Grasslands

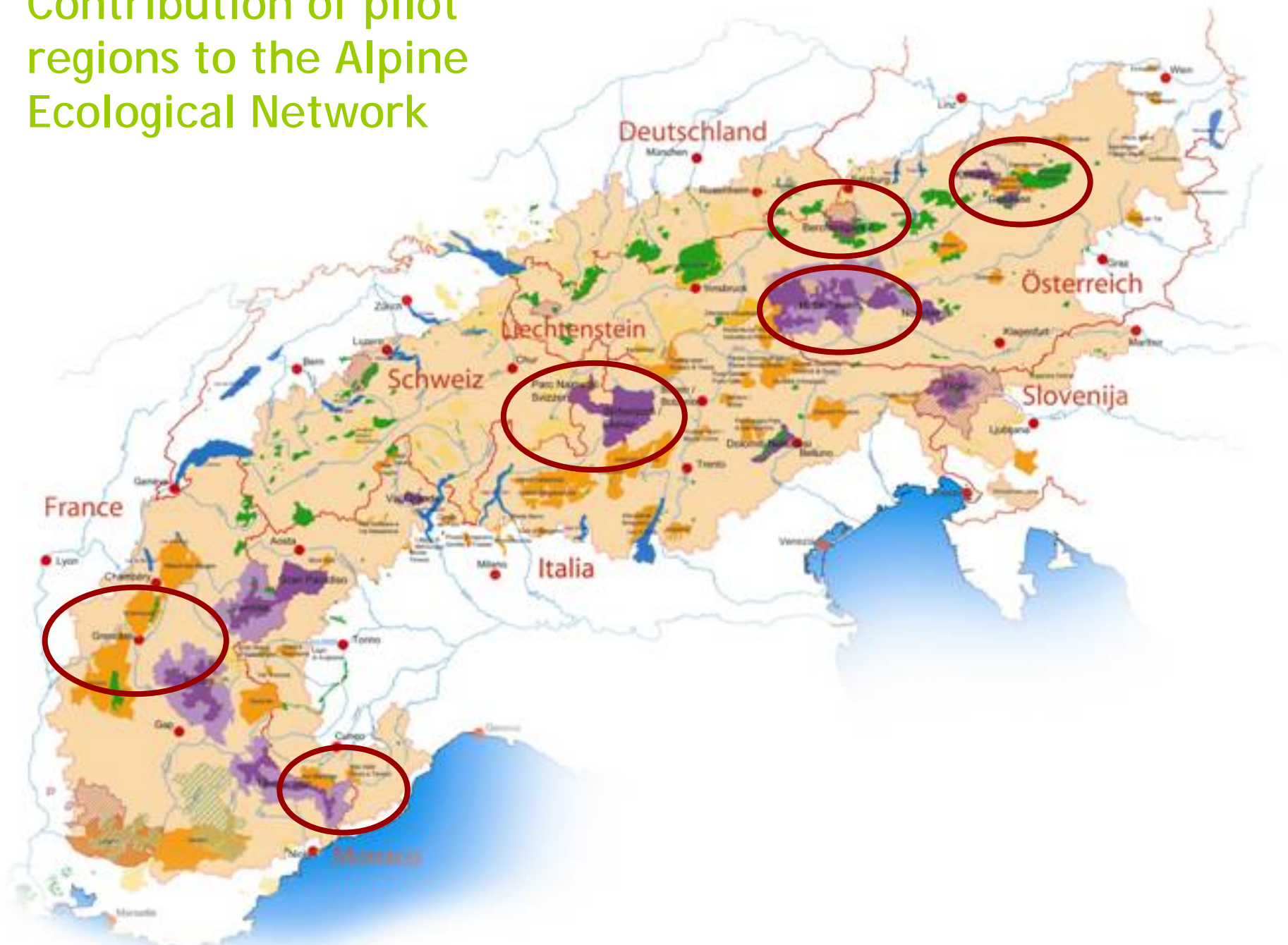


Transboundary Workshop on spatial planning





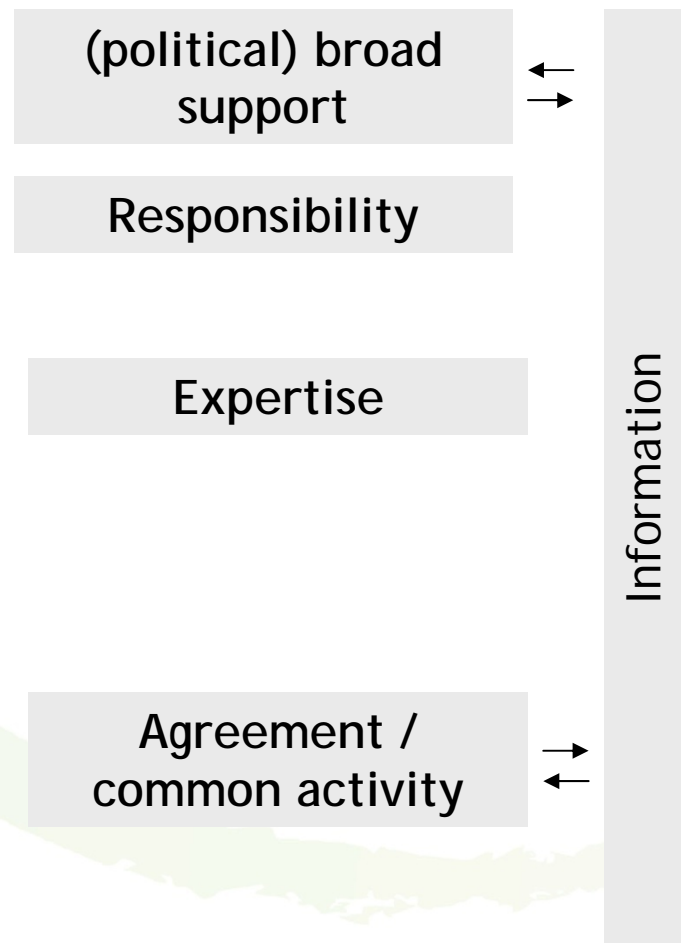
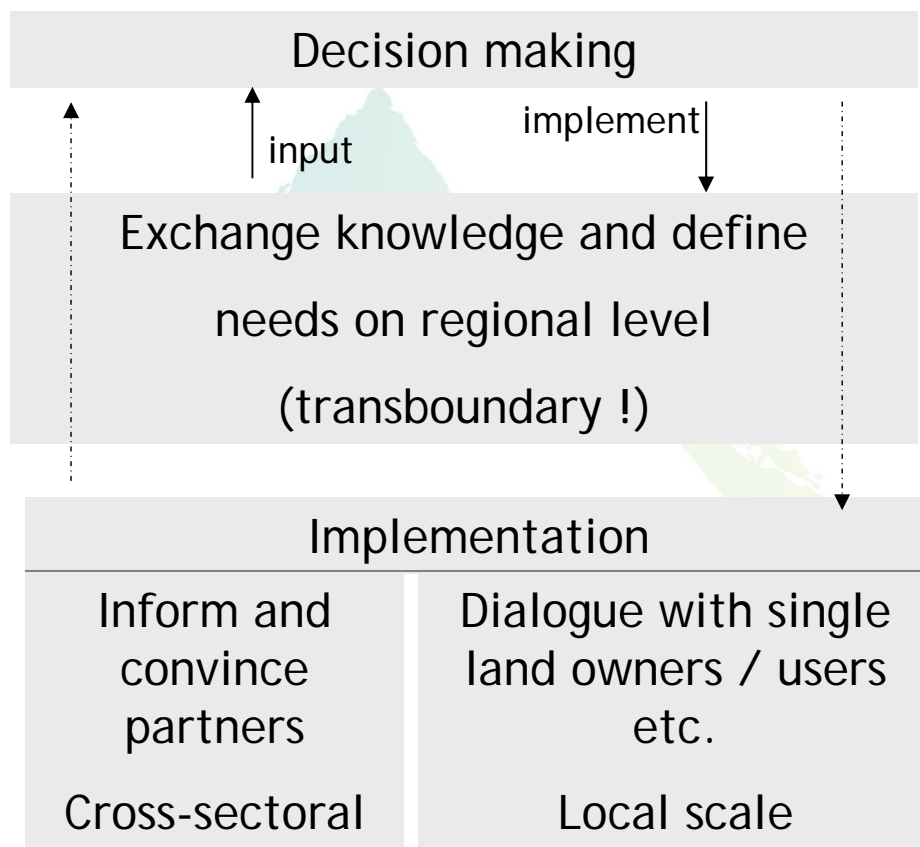
Contribution of pilot regions to the Alpine Ecological Network





©created by Georg Sojer, Berchtesgaden

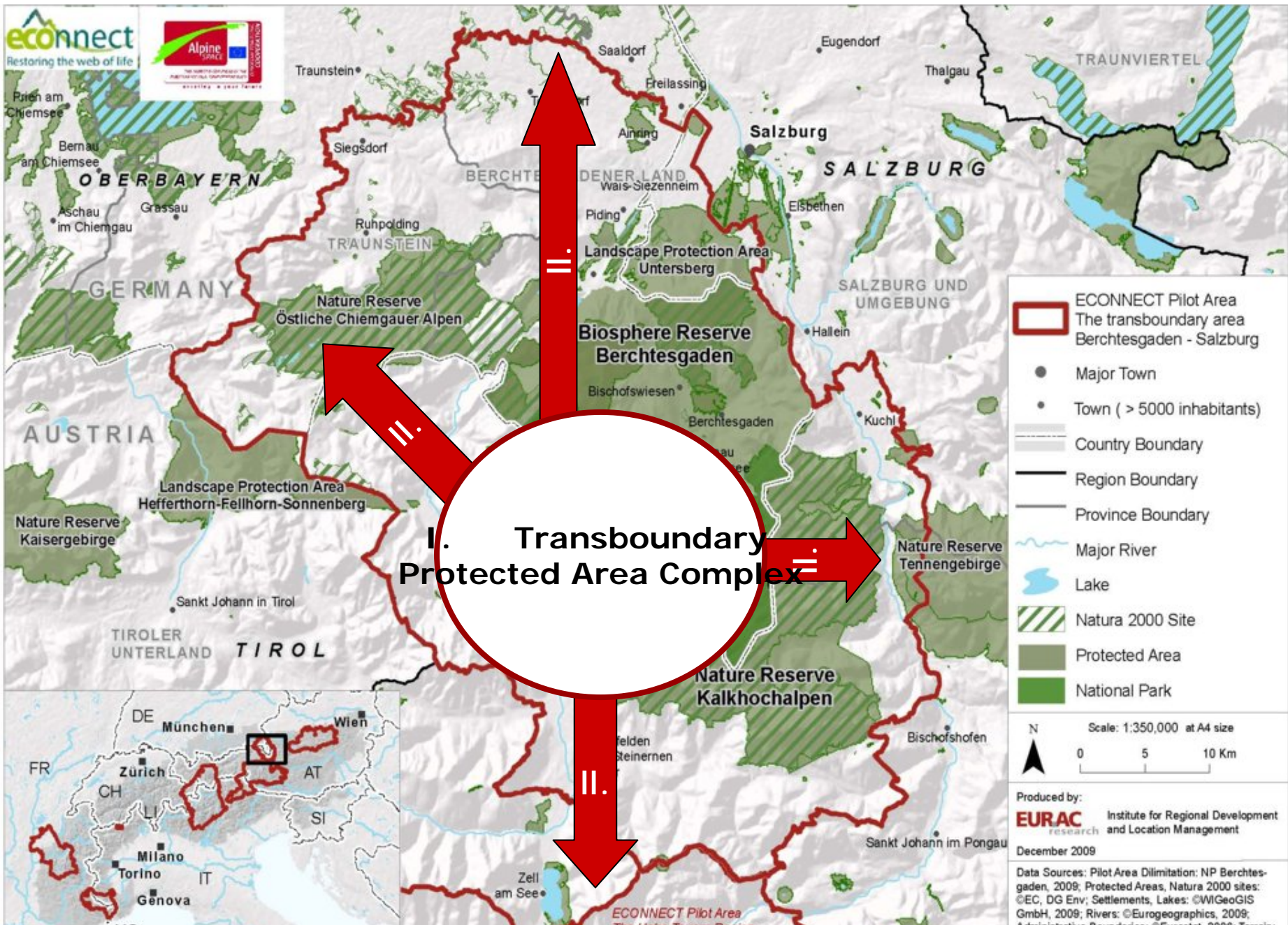
Stakeholder Involvement



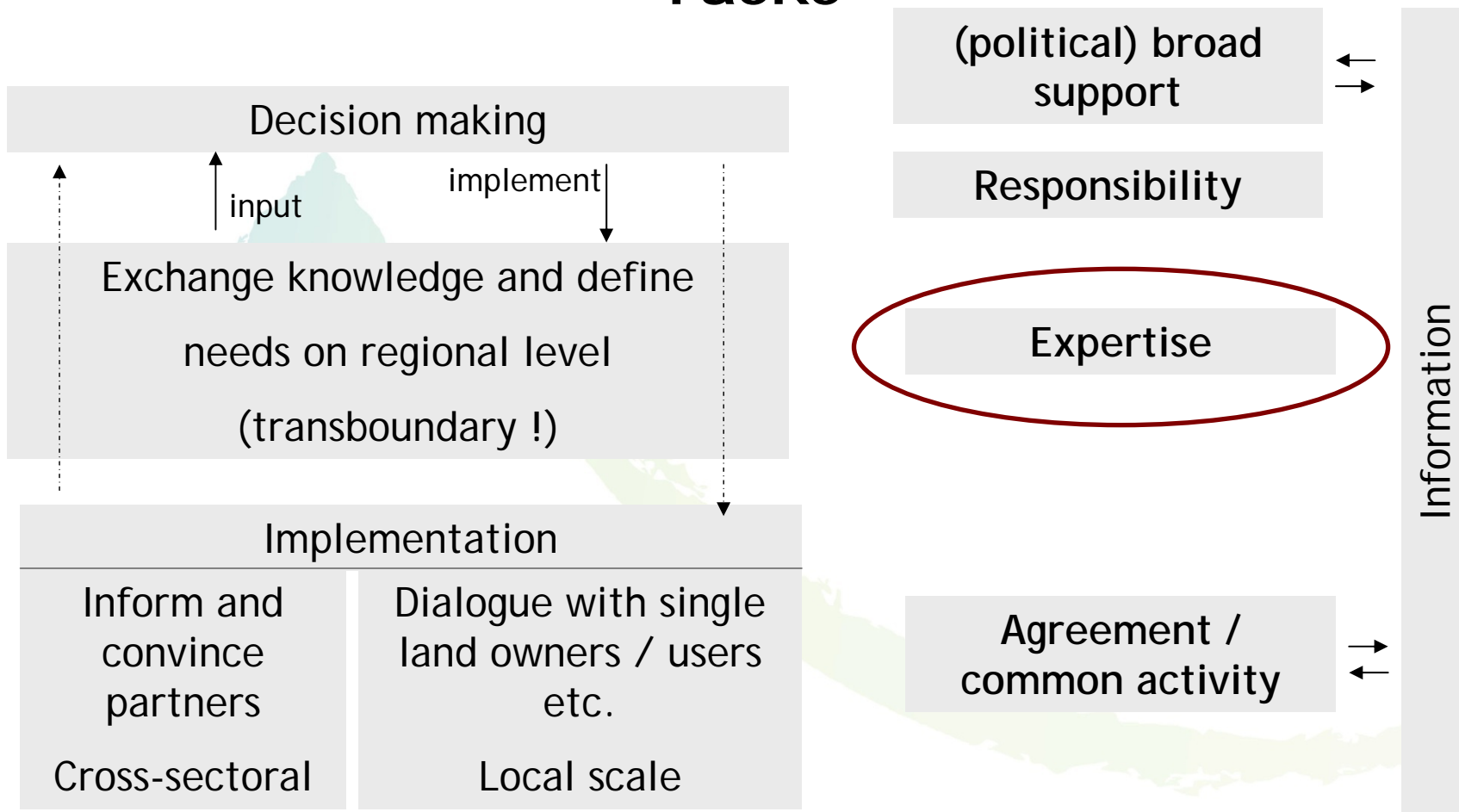
Challenges for stakeholder

- Transboundary pilot region
- Interdisciplinary / cross-sectoral approach
- Different „scales“ even within one pilot region

Pilotregion "Berchtesgaden-Salzburg"



Tasks

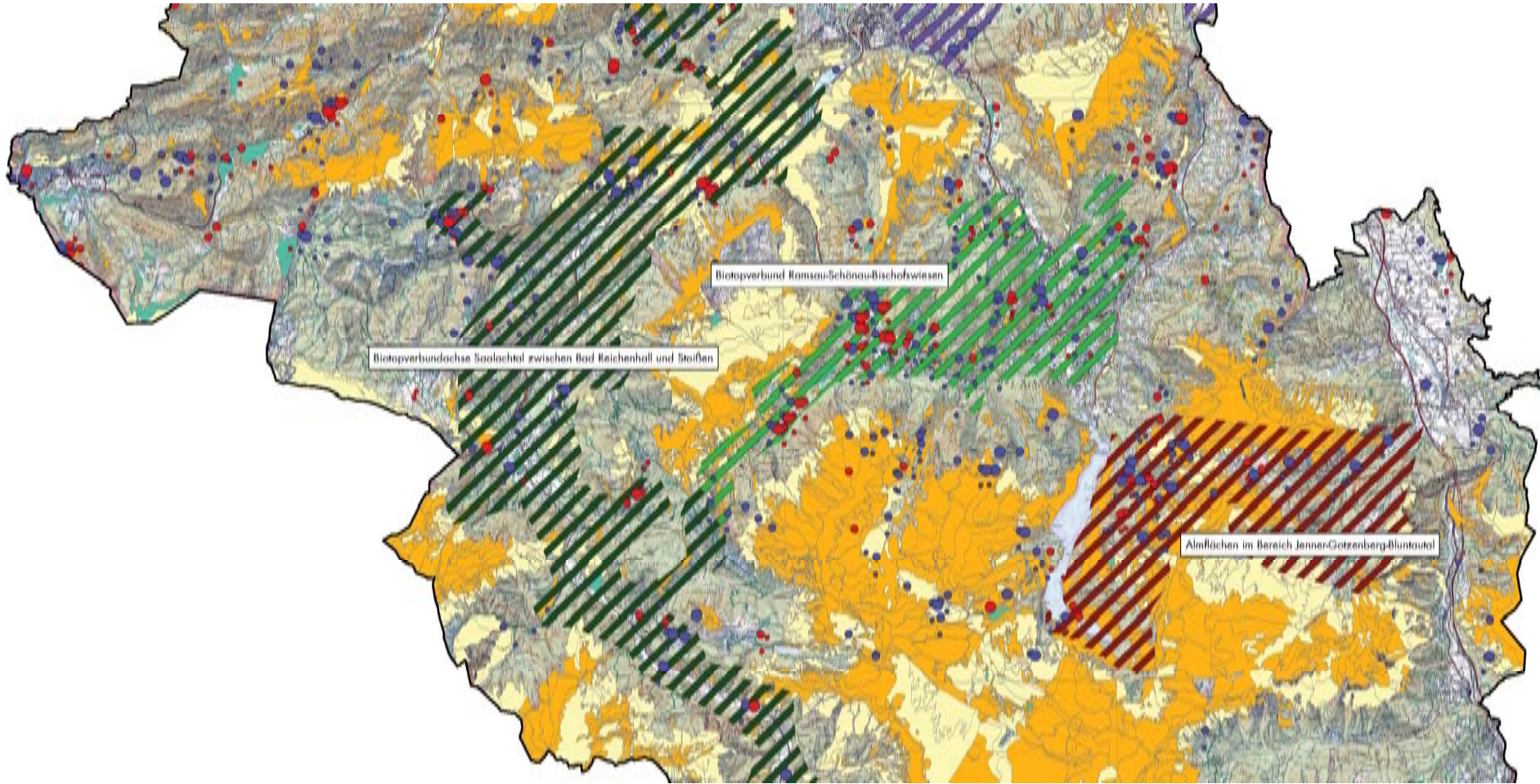


Common activity on concrete measures

- Revitalisation of the river Saletbach (start within NP, symbol for partners outside)
- Extensive utilisation of grasslands (Studie zu Zielartenkollektiven; Einbindung in Flächennutzungspläne etc.)
- Renewal of an amphibian fence
- Exchange workshop on integration of connectivity into planning tools in the transboundary pilot region



Vorschlagsgebiete für regionale Umsetzungsprojekte



Biotopeverbund Almflächen im Bereich Jenner - Gotzenberg - Bluntautal

Besonders hohe Vielfalt wertgebender Tagfalter- und Heuschreckenarten;
Almweiden, Magerrasen und alpine Rasen, Feucht- und Niedermoorflächen
Dukatenfalter hat hier eine seiner letzten Populationen Südbayerns, aber auch
Schwarzer Apollo oder Rotflügelige Schnarrschrecke



Beteiligung von Partnern in ECONNECT:

Anhand von konkreten Fallbeispielen (=measures) verschiedene Interessensgruppen auf unterschiedlichen Ebenen einbeziehen (weniger generelle Diskussionen) :

- 1.) Saletbach: Einbindung von Wasserwirtschaft, Fischerei, anderer Behörden z.B. Bay. Schlösser- und Seenverwaltung
 - 2.) Amphibien am Taubensee: Bund Naturschutz, BaySF, Straßenbauamt
 - 3.) Extensives Grünland: Landwirtschaft, Tourismus, Gemeinden
 - 4.) Planungsworkshop:; Grenzübergreifende Einbindung alle raumplanungsrelevanter Verantwortungsträger
- + begleitende Maßnahmen der Informationsweitergabe auf allen Ebenen: Wintervortragsreihe, Beobachtungswettbewerb „Unbekannte Vielfalt“ , Ausstellungen