

# The ECONNECT project

Restoring the web of life - Ecological networks for more biodiversity in the Alps







- EU Alpine Space, 3.2 mio Euro (public funding)
- September 08 - August 2011
- 16 partners plus many co-partners:

#### Protected areas

- Gesäuse (A)
- Berchtesgaden/Salzburg (D)
- Isère (F)
- Alpi Marittime (I)
- Hohe Tauern (A)
- Schweizer NP (CH)
- Task Force (International)

#### Observers

- ISCAR
- Platform/BfN
- Logarska Dolina

#### Authorities

- Umweltbundesamt (A)
- Environment Ministry (I)
- Valle d'Aosta (I)
- Conseil général de l'Isère (F)

#### Science

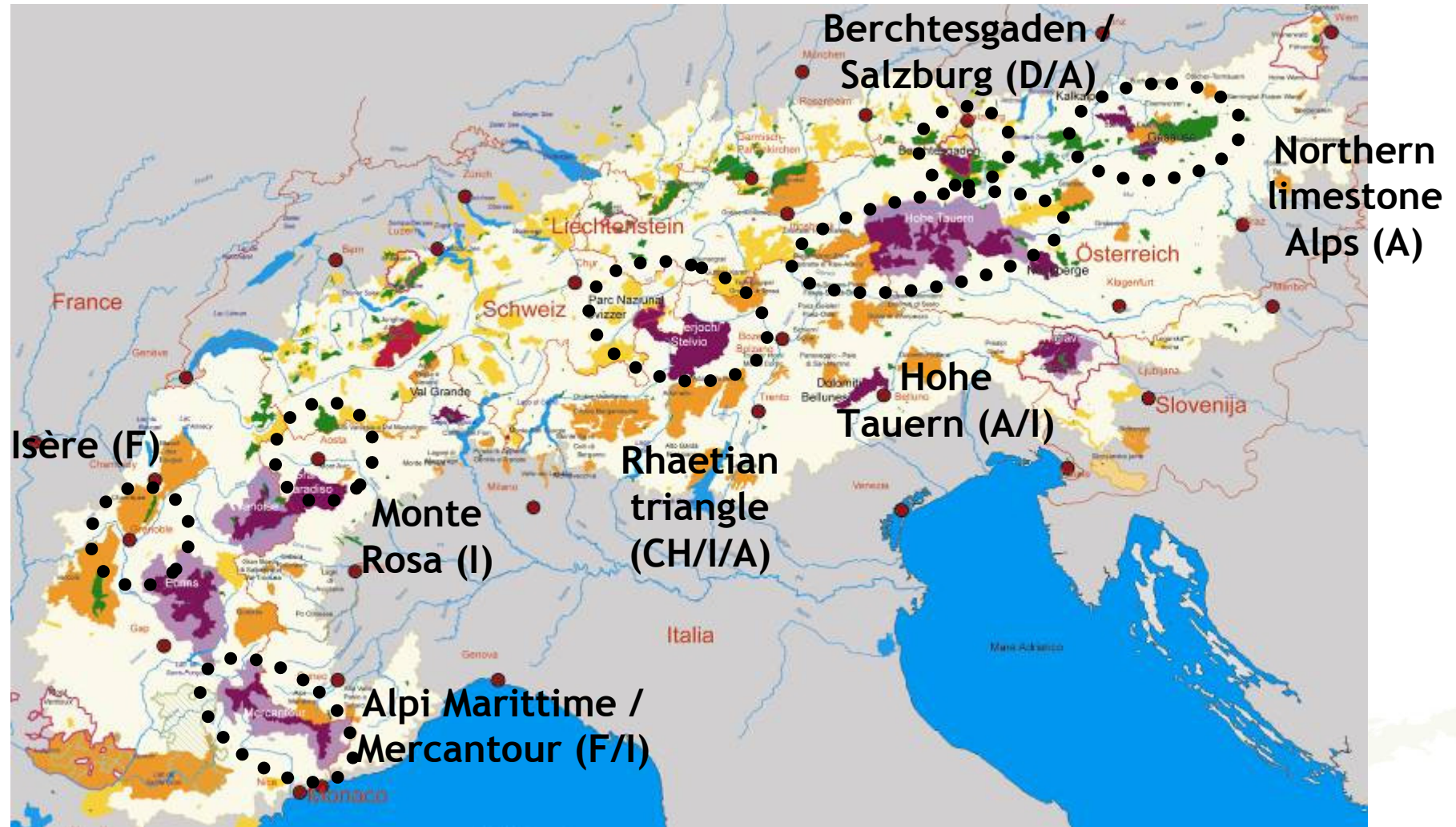
- FIWI, Lead partner (A)
- EURAC (I)
- Uni Innsbruck (A)
- Cemagref (F)

#### NGOs:

- CIPRA (FL)
- WWF (I)

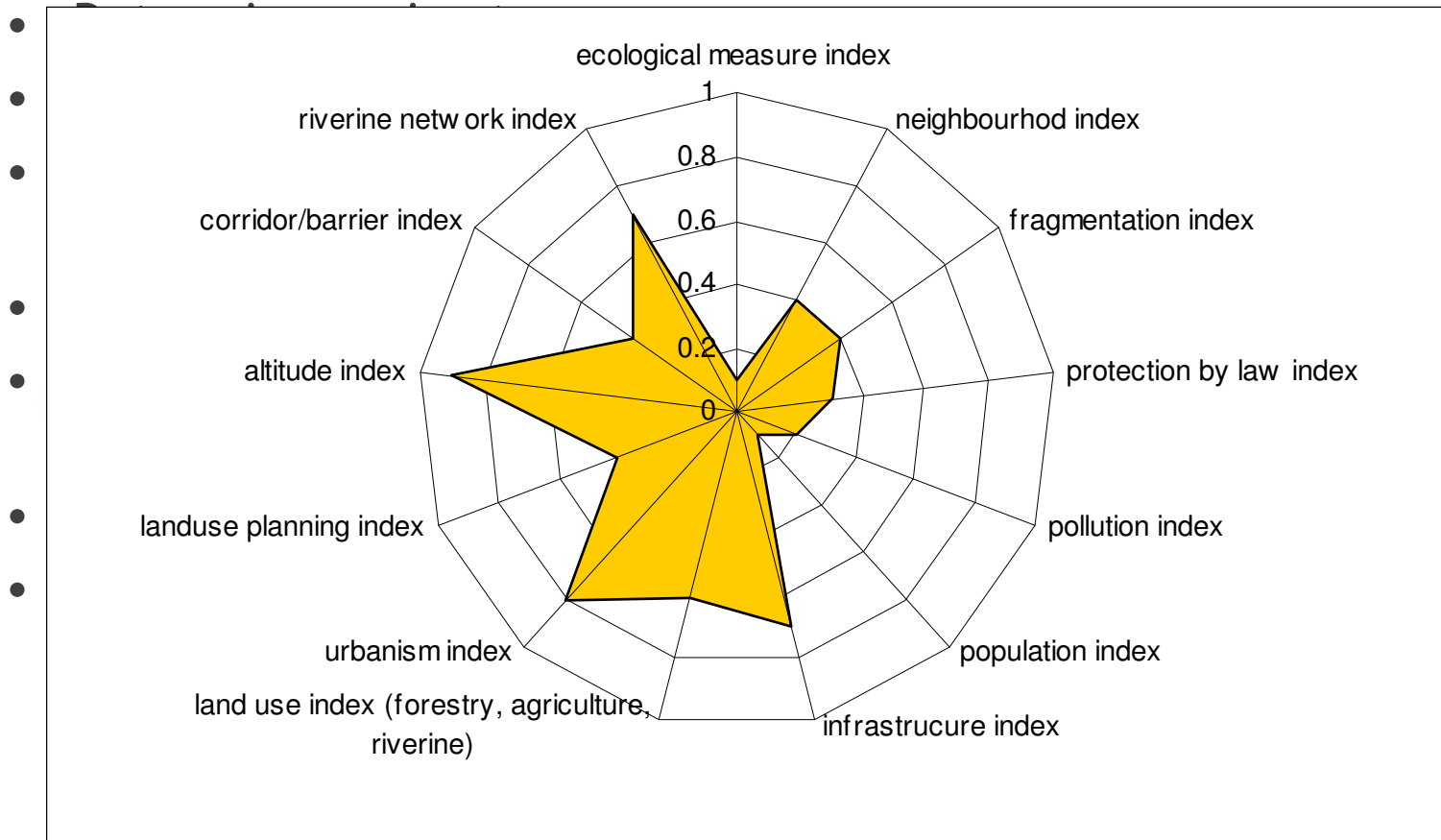


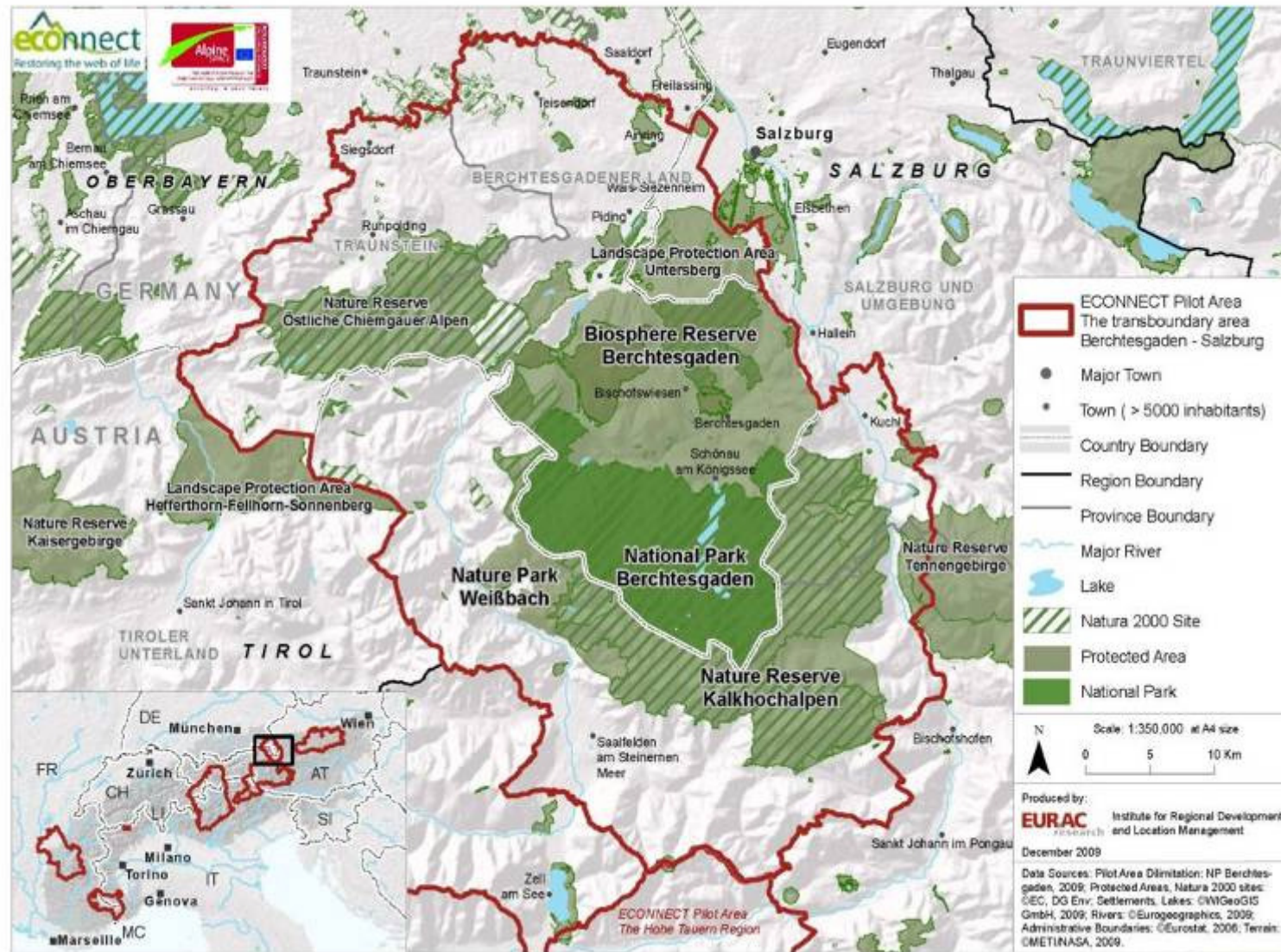
- Background: initiated by ALPARC, CIPRA, ISCAR and WWF (Ecological Continuum Initiative)
- Aim: „Restoring the web of life“: protect biodiversity throughout the Alps by overcoming habitat fragmentation → contribution to Nature Protection Protocol AC art. 12
- Focus: implementation in 7 pilot regions
- Other activities: harmonisation of geographical data, analysis and mapping of physical and **legal barriers** and migration corridors, knowledge transfer, raise awareness





## Common methodology, adapted to individual needs:







- Priority habitat: extensively utilised grasslands
- Definition of focal species (e.g. butterflies, dragon flies) and priority areas in the pilot region (basis for actions)
- Analysis and recommendations for financial support of traditionally cultivated grasslands (comparison Austria - Germany)
- Best Practices (develop innovative financial measures, testing of Austrian instruments)
- Long-term protection of elements of the ecological network (e.g. contractual measures)





- Visualizing habitats and modelling barriers and corridors on a pan-Alpine level
  - Selected species : Red deer, Black grouse, Fish otter, Bullhead (Cottus gobio), Wolf, Brown Bear, Lynx, Griffon vulture (Gyps fulvus)
  - Functional landscape connectivity corridor models
- Mapping of priority connectivity areas (Alps wide and pilot region level)
  - web-based geodata and metadata catalogue



- Transalpine approach
- Adaptation to climate change
- Strong cooperation with Alpine Convention and with local stakeholders
- Work in- and outside protected areas
- Strengthen cooperation between institutions
- Approved and tested methodological approach, promotion of this procedure
- Knowledge about gaps and barriers to ecological connectivity

The challenge: overcome barriers in people's minds!



More information:

- [www.econnectproject.eu](http://www.econnectproject.eu)
- in the project flyer
- or just ask us!